

Continental[®] BATTERIES

DATA SHEET

30H-HD

PART # 30H-HD
BCI 30H
VOLTAGE 12V
Ah 92



PHYSICAL SPECIFICATIONS

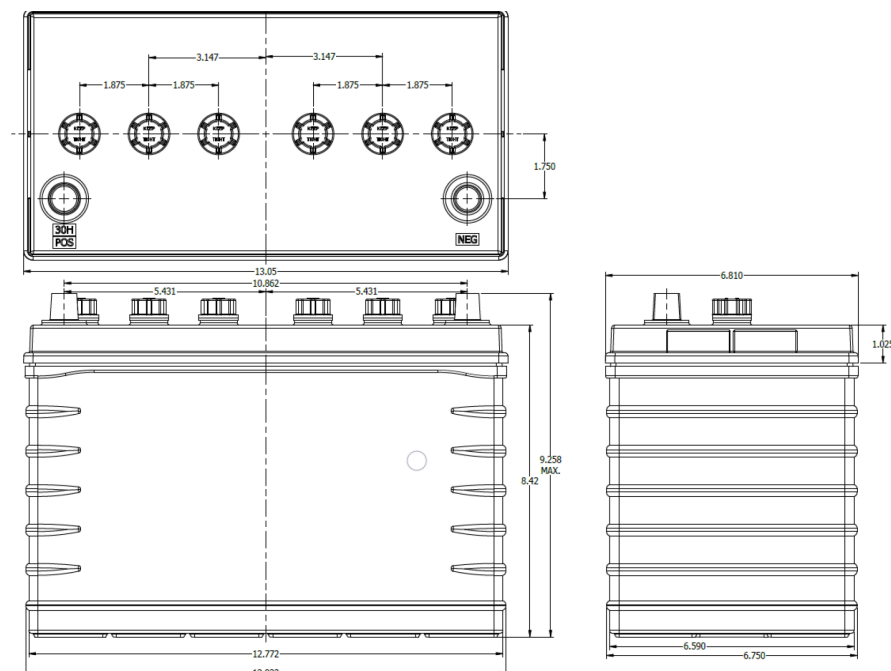
Battery Type	Weight	Dimensions (L x W x H)	Container Material	Cover Material	Separator Material	Handle Option
Flooded	52.9 lbs 24 kgs	12.932 x 6.750 x 9.258" 328.5 x 171.5 x 235.2 mm	Polypropylene	Polypropylene	Polyethylene	No

ELECTRICAL SPECIFICATIONS

Nominal Voltage	SAE CCA (-18°C/0°F)	SAE CA (0°C/32°F)	SAE RC (27°C/80°F)	Ref. Ah Capacity 20 Hr	Battery Terminal Type	Electrolyte Specific Gravity Range
12.6 V	675 A	875 A	175 Min	92 Ah	Top Post SAE Type A	1.270-1.300

MISC SPECIFICATIONS

Maximum Discharge Current	1000 A (5 sec)
Positive Grid Alloy	Lead Calcium Tin
Negative Grid Alloy	Lead Calcium
Terminal Polarity	+ -



WWW.GOCBS.COM

