

# Continental<sup>®</sup>

## BATTERIES

DATA SHEET

# 31S-XHD

PART # 31S-XHD  
 BCI 31S  
 VOLTAGE 12V  
 Ah 92



### PHYSICAL SPECIFICATIONS

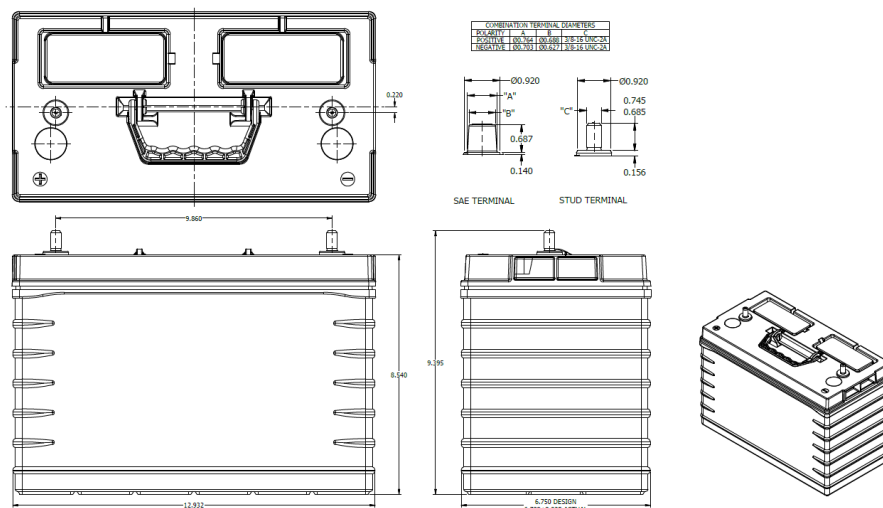
Battery Type	Weight	Dimensions (L x W x H)	Container Material	Cover Material	Seperator Material	Handle Option
Flooded	56.43 lbs 25.6 kgs	12.932 x 6.75 x 9.31 " 328.5 x 171.4 x 236 mm	Polypropylene	Polypropylene	Polyethylene	Yes

### ELECTRICAL SPECIFICATIONS

Nominal Voltage	SAE CCA (-18°C/0°F)	SAE CA (0°C/32°F)	SAE RC (27°C/80°F)	Ref. Ah Capacity 20 Hr	Battery Terminal Type	Electrolyte Specific Gravity Range
12.6 V	950 A	1100 A	180 Min	92 Ah	Threaded Post Type T	1.270-1.300

### MISC SPECIFICATIONS

Maximum Discharge Current	1500 A (5 sec)
Positive Grid Alloy	Lead Calcium Tin
Negative Grid Alloy	Lead Calcium
Terminal Polarity	+ -



[WWW.GOCBS.COM](http://WWW.GOCBS.COM)

